

KPoly Water Tanks

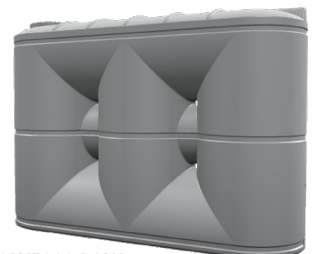
- Available in a wide range of colours, comparable to Colorbond® colours.
- 1,000L to 10,000L in Slimline, Round, and Underdeck.
- Our tanks are manufactured using approved poly (polyethylene), that complies to standard AS/NZS4020. Our tank PE material meets the acceptable quality values for drinking water.
- 10 year Replacement Warranty.

Slimline Range

Model	Capacity (L)	Height (mm)	Length (mm)	Width (mm)
KPOLY1000	1000	1775	2000	400
KPOLY1500	1500	2040	1450	670
KPOLY2000	2000	1775	2480	620
KPOLY2000 TALL	2000	2170	2000	620
KPOLY2000 LOW	2000	1225	2900	760
KPOLY3000	3000	1960	2795	725
KPOLY3000 TALL	3000	2190	2400	750
KPOLY3000 SUPER SLIM	3000	1990	2940	640
KPOLY4000	4000	2105	2930	870
KPOLY5000	5000	2210	3185	955
KPOLY5000 LOW	5000	1990	3280	1040



KPOLY2000 TALL



KPOLY5000 LOW

The KPOLY2000 LOW design has 2 x 25mm brass outlets; all other Slimline designs have 3 x 25mm brass outlets for connections.

Due to the manufacturing process all dimensions are nominal and may differ by up to +/- 3%.

Round Range

Model	Capacity (L)	Height (mm)	Diameter (mm)
KPOLY1000	1000	1930	880
KPOLY2200	2200	1900	1300
KPOLY3000	3000	1750	1565
KPOLY4200	4200	2100	1700
KPOLY5000	5000	1990	1990
KPOLY10000	10 000	2420	2464



KPOLY3000

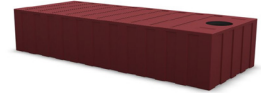
All Round Tank designs have 2 x 25mm brass outlets at 3 o'clock and 9 o'clock positions.

Due to the manufacturing process all dimensions are nominal and may differ by up to +/- 3%.

KPoly Water Tanks

Underdeck Range

Model	Capacity (L)	Height (mm)	Length (mm)	Width (mm)
KPOLY2000	2000	820	2400	1200
KPOLY2000 LOW	2000	650	2970	1190



KPOLY2000 LOW

Colour Range

with Colorbond® comparison

						
Black <i>Night Sky®</i>	Charcoal <i>Monument®</i>	Metal Grey <i>Ironstone®</i>	Slate Grey <i>Woodland Grey®</i>	Boulder Grey <i>Basalt®</i>	Native Grey <i>Wallaby®</i>	Armour Grey <i>Windspray®</i>
						
Light Grey	Earhtone <i>Bushland®</i>	Birch Grey <i>Dune®</i>	Gull Grey <i>Shale Grey™</i>	White <i>Surfmist®</i>	Autumn Brown <i>Jasper®</i>	Ravine <i>Gully®</i>
						
Inlet Beige <i>Cove®</i>	Beige	Dusk <i>Evening Haze®</i>	Wheat <i>Harvest®</i>	Desert Haze <i>Sand Bank®</i>	Merino <i>Paperbark®</i>	Smooth Cream <i>Classic Cream™</i>
						
Heritage Green <i>Cottage Green®</i>	Rivergum <i>Wilderness®</i>	Mist Green <i>Pale Eucalypt®</i>	Tidal Green <i>Mangrove®</i>	Mountain Blue <i>Deep Ocean®</i>	Heritage Red <i>Monor Red®</i>	Terrain Red <i>Terrain®</i>

1300 736 562

kingspanwatertanks.com.au

sales.au@kingspan.com

We take every care to ensure that the information in this document is accurate at the point of publication. Specification may vary (within a small parameter) due to manufacturing process variations or environmental conditions. All images are for illustration purposes only and should not be taken as binding. The actual product may vary, and specification/dimensions/colour/other attributes may differ.

To ensure you are viewing the most recent and accurate product information, please visit this link: www.kingspanwatertanks.com.au/kpolybrochure

©Kingspan and the Lion Device are Registered Trademarks of the Kingspan Group plc in the UK, Ireland and other countries. All rights reserved.