

# Technical Data Sheet

## Product Description

The Aquacomb water storage system is a series of interconnecting polyethylene water tanks or 'pods' that are positioned inside a concrete slab to capture, store and either re-use or release rain water.

The system is designed to manage rainwater (OSR) and stormwater (OSD) for residential, industrial and commercial properties.

Aquacomb is compliant to the following standards:

- AS 1646:2007 Elastomeric seals for waterworks purposes
- AS 4020:2018 for drinking water

| Pod Volume | Length | Width  | Height | Load Rating<br>(Load capacity of pod) |
|------------|--------|--------|--------|---------------------------------------|
| 240 L      | 1090mm | 1090mm | 225mm  | 2000kg (UDL)                          |
| 320 L      | 1090mm | 1090mm | 300mm  | 2000kg (UDL)                          |

## Material Properties

### Pod

Material: Polyethylene

Material thickness: 4mm

### Seal

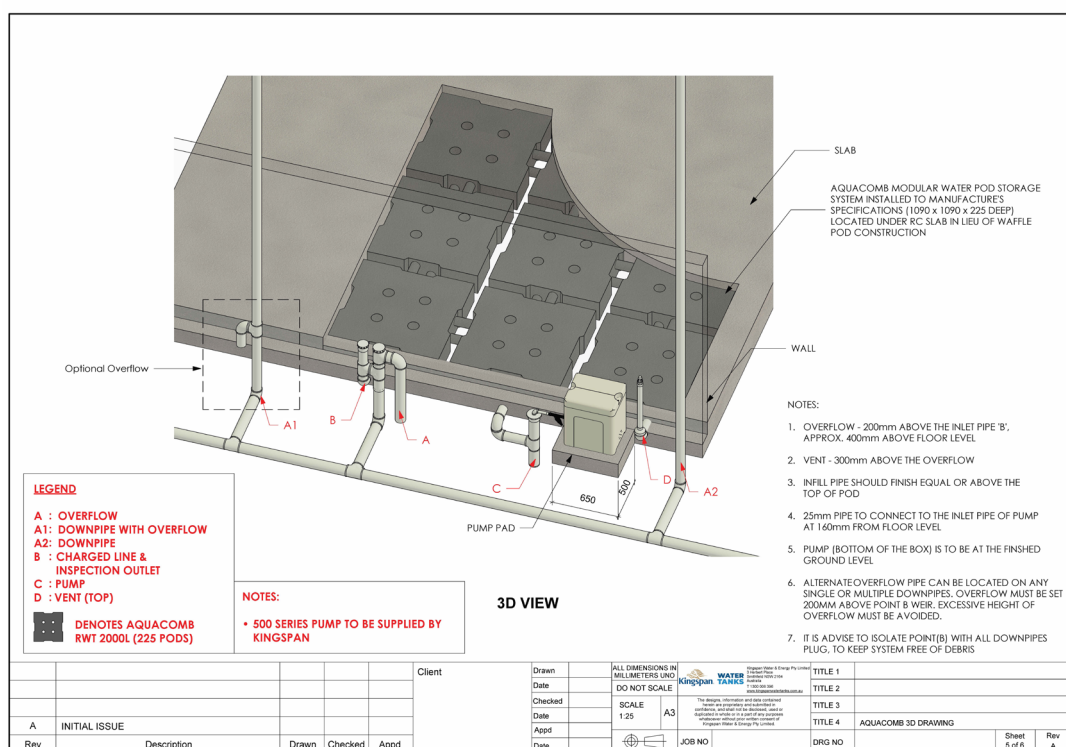
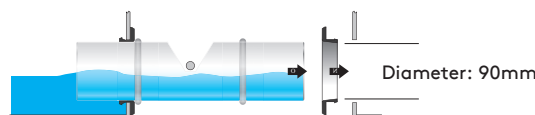
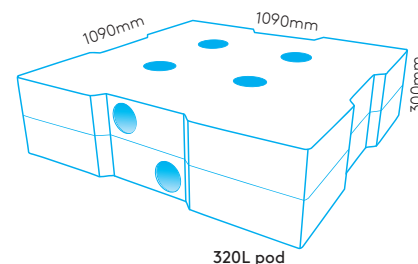
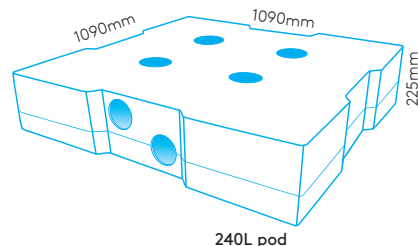
Material: EDPM

Type: Kinetic

### Flow Pipe

Material: Polypropylene

Size: 90mm diameter



We take every care to ensure that the information in this document is accurate at the point of publication. Information should not be taken as binding. To ensure you are viewing the most up to date information, please visit: [www.aquacomb.com.au/technicaldatasheet](http://www.aquacomb.com.au/technicaldatasheet)

©Kingspan and the Lion Device are Registered Trademarks of the Kingspan Group. All rights reserved.  
Registered Office: Kingspan Water & Energy Pty Limited, 3 Herbert Place, Smithfield, NSW 2164